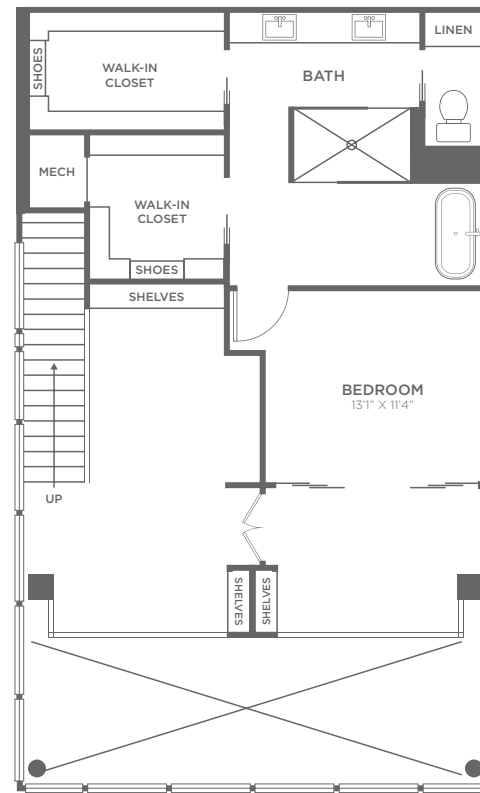
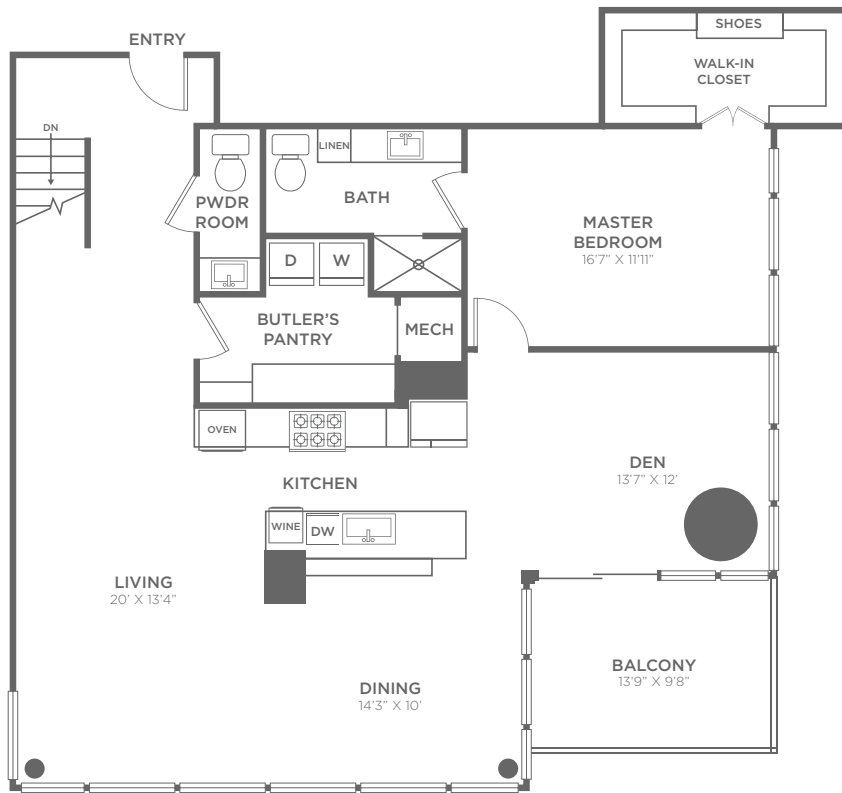
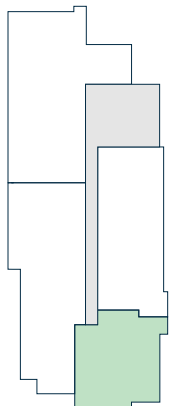


# P6

2 BEDROOM + DEN, DUPLEX, 2.5 BATH, 2587 SQ.FT.



TRUE NORTH 



FLOOR 33



All dimensions are approximate and subject to construction variances.  
Plans may contain minor variations from floor to floor.

[www.LiveParkDistrict.com](http://www.LiveParkDistrict.com)

(214) 532 9440  
[LiveParkDistrict@fsresidential.com](mailto:LiveParkDistrict@fsresidential.com)

2120 North Olive Street  
Dallas, TX 75201